

**Reduce Installation Costs and Weight** by eliminating large cable runs to manual switches through robust remote switching of high-ampere engine & auxiliary loads.

**Ensure Flawless Operation for the Life of the Installation** with a hermetically sealed contactor sealed against dust & moisture intrusion.

**Get Positive Confirmation of Relay On/Off State** with optional auxiliary contacts that support remote status indication.

**High Contact Voltage Rating** easily supports 12 and 24 Vdc applications while also supporting higher voltage applications up to 48 V and well beyond.



*75 A Version Also Available*



**Ignition Protected** safe for installation in closed compartments with potential explosive gases



**High Electrical Switching Endurance** delivers 6,000 cycles at 250A / 450V, 100,000 cycles at 250A / 14V



**High Interrupt Current Capability** safely able to open in a locked starter situation (up to 1,500 A @ 14 Vdc)

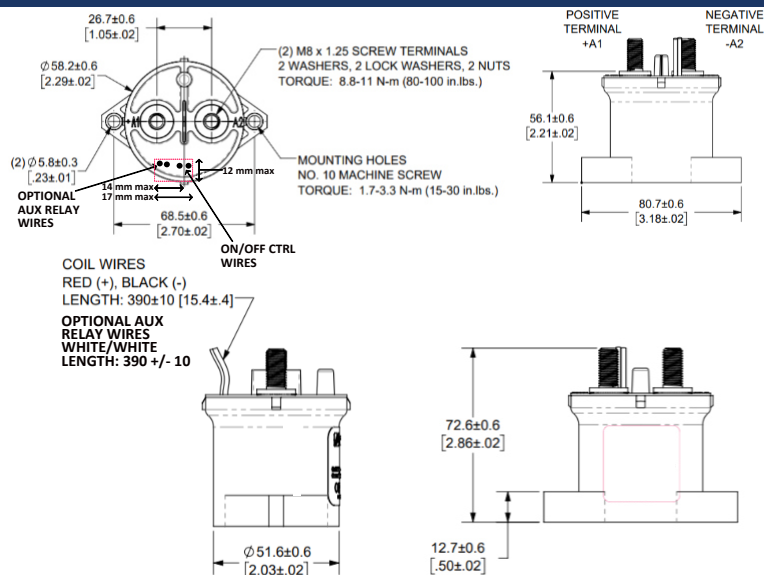


**Bullet-proof Construction:** Sealed device, high temp materials for engine compartment applications, and stainless self-locking hardware.

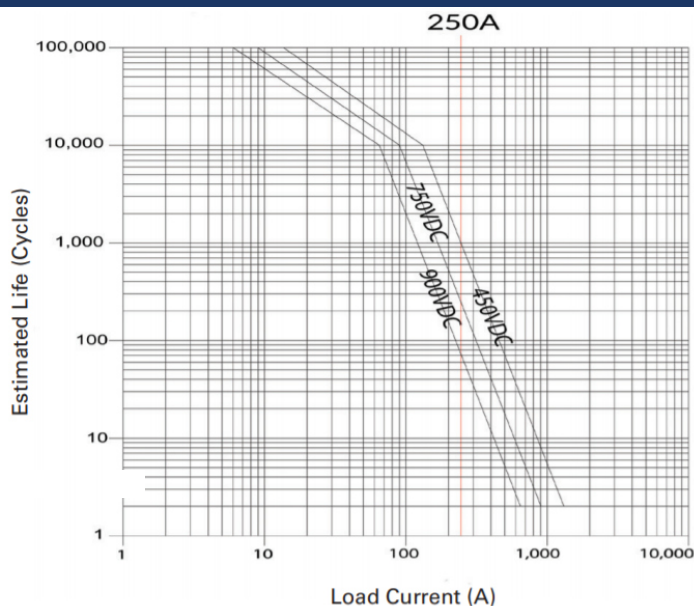


**4 Year Industry Leading Warranty**

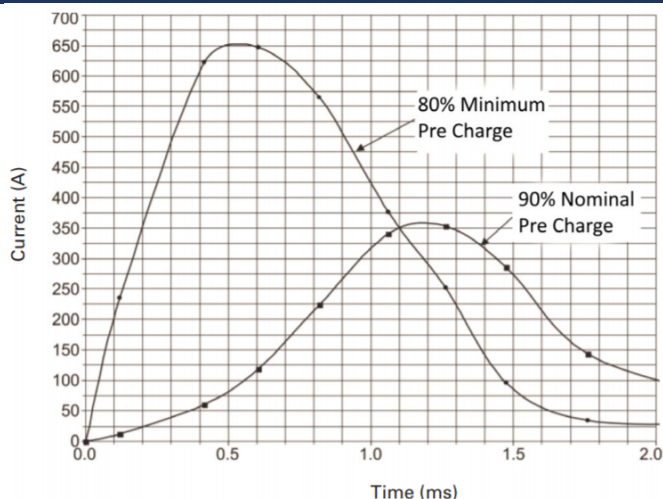
## Product Dimensions



## Estimated Make/Break chart



## Capacitive Make Test Curves



## Electrical Specifications

Operational Control Voltage Range	9-36 Vdc
Coil Power Draw (Nominal)	1.7 Watts
Minimum Pick-Up Voltage	9 Vdc
Max Drop-Out Voltage	6 Vdc
Coil Inrush Current (Max)	3.8 A
Continuous Holding Current (12 Vdc)	0.13 A
Continuous Holding Current (24 Vdc)	0.07 A
Electrical Life (450 Vdc / 250 Amp)	5,000 Cycles
Dielectric Voltage Withstand	2,200 VRMS
Maximum Break Current (320 Vdc)	2,000 Amps
Maximum Contact Voltage	900 Vdc
Maximum Continuous Current	250 Amps
Contact Arrangement	SPST-NO (Form A)
Voltage Drop (250A)	< 50 mV
Dielectric Withstand Voltage	2200 Vrms
Rated Contact Voltages	12 - 900 Vdc
Insulation Resistance (New)	100 M-Ohm (500 Vdc)
Insulation Resistance (End of Life)	50 M-Ohm @ 500 Vdc
Aux Contacts Normally Open/Closed	Open

## Additional Specifications

Max Operating Temperature	85 C (185 F)
Min Operating Temperature	-40 C (-40 F)
Terminal Material	Silver Plated Copper
Housing Material	Nylon (UL 94-V0)
Hardware Material	18-8 Stainless, Self-Locking
Terminal Stud Size	M8-1.25
Max Terminal Stud Torque	80 in-lbs (11.3 N-m)
Cable Terminal Stud Hole Size	5/16" (M8)
Ignition Protection	ISO-8846 / UL 1500
Flammability Rating	UL 94 V0
Operating Humidity	0 to 90% RH
Ingress Protection	IP67 / IP6K9K
Mounting Holes Size	#10
Operational Shock, 11 ms, ½ Sine	20g Peak
Vibration 80 - 2000 Hz, Full Sine	20g Peak
Contact Close Time (Including bounce)	25 ms max
Contact Open / Release Time	12 ms max
Mechanical Life	1,000,000 cycles
Altitude (operating)	< 4,000 meters

## Part Numbers

Part Numbers	Resell Pack	Bulk Pack
Contact, 250A, 12/24 V	7021	7021B
Contact, 250A, 12/24 V, w/ Aux Contacts	7022	7022B

## Similar Part Numbers

Similar Part Numbers	Resell Pack	Bulk Pack
Contact, 75A, 12V	7023	7023B
Contact, 75A, 12 V, w/ Aux Contacts	7024	7024B
Contact, 75A, 24 V	7025	7025B
Contact, 75A, 24 V, w/ Aux Contacts	7026	7026B

**\* DISCONNECT BATTERY FROM POWER DISTRIBUTION SYSTEM BEFORE INSTALLING PRODUCT TO PREVENT ELECTRICAL SHOCK OR PRODUCT DAMAGE**



www.egismobile.com  
360.768.1211  
Bellingham, WA U.S.A

