

Enables orderly turn on events minimizing operator interaction. Turning an output On based on after a programmable amount of time

High Amperage design lessens the need for additional relays and complicated wiring.

Compact Footprint and high temp materials allows for installation in confined spaces even in adverse locations, such as near engine bay heat.



Also Available: P/N: 5604 30A Relay One Shot w/Optional On Delay



Ultra-Low Power Draw eliminates vehicle downtime due to dead batteries. Lowest off-state current draw (1.3 mA).



Adjustable Time Delay Before Output Turns ON (0 sec - 200 sec) allows for flexibility in system implementation to meet specific timing requirements.



Diagnostic Feedback via on-board multi-color LEDs



Bullet-proof Construction: Sealed unit, high temperature materials allow mounting anywhere on vehicle. Integrated thermal overload protection


4

4 Year Industry Leading Warranty

Dip Switch Setting Options & Features

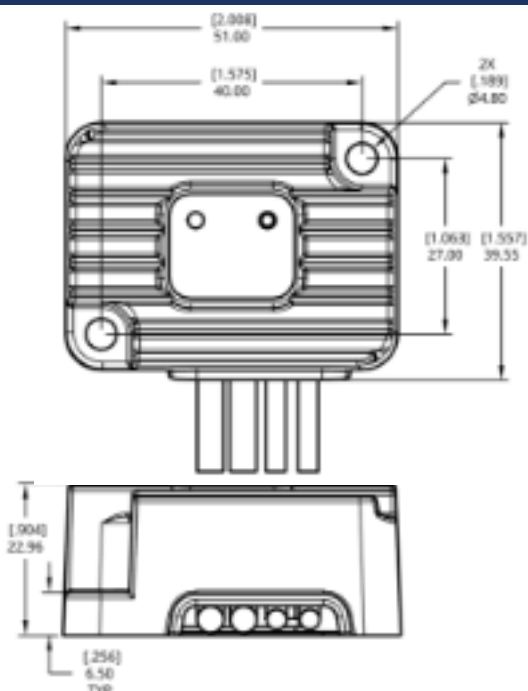
*** DISCONNECT BATTERY FROM POWER DISTRIBUTION SYSTEM BEFORE INSTALLING PRODUCT TO PREVENT ELECTRICAL SHOCK OR PRODUCT DAMAGE**
**** Use of Ignition On signal strongly recommended for all first responder installs to ensure rapid relay ON and maximize up-time in adverse situations.**

ON					
<input type="checkbox"/>	<input type="checkbox"/>	<input type="checkbox"/>	<input type="checkbox"/>	<input type="checkbox"/>	<input type="checkbox"/>
1	OFF				6
ON Time Delay					
1	2	3	4	5	
<input type="checkbox"/>	<input type="checkbox"/>	<input type="checkbox"/>	<input type="checkbox"/>	<input type="checkbox"/>	No ADD
<input type="checkbox"/>	<input type="checkbox"/>	<input type="checkbox"/>	<input type="checkbox"/>	<input type="checkbox"/>	ADD
2	5	10	20	40	Seconds
All Times Are Additive					
5X Time Delay					
<input type="checkbox"/>	6	5X			
<input type="checkbox"/>		1X			

 = Factory Default

DS1-DS5: Determines time delay before output turns on after receiving a positive trigger signal. Each switch adds a specific amount of time to the On Delay incrementally
DS6: Determines multiplier of DS1-DS5 for time delay output. Setting switch to ON results in 5x time multiplier of DS1-DS5 (10-200 Sec). Setting to OFF results in 1x (No additional multiplier = 2-40 Sec)

Dimensions



Methods of Operation

Positive (+) Output (Orange Wire) Turns On After Set On Time Delay Setting (DS1-DS5 & DS6) if:

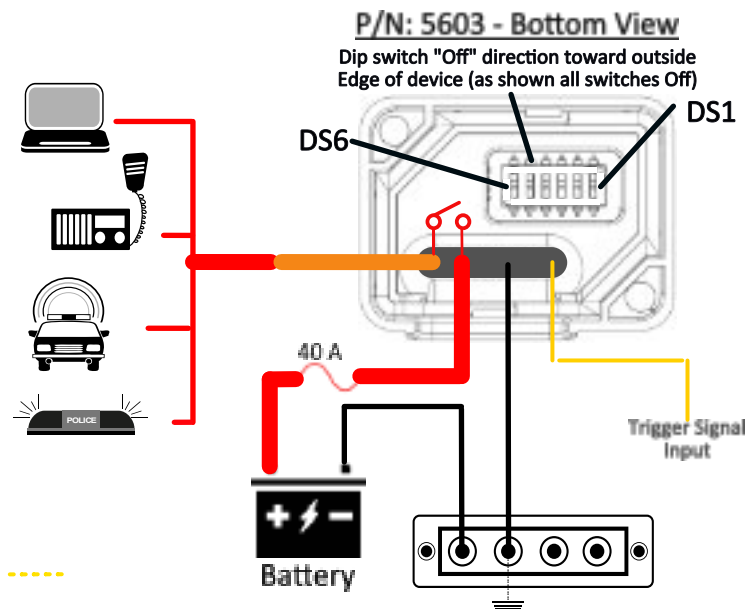
Yellow Input Wire (Positive Signal) is greater than 10 Vdc during and after programmed time delay set.

Positive (+) Output (Orange Wire) Turns Off if:

Yellow Input Wire Voltage falls from greater than 10 Vdc to less than 10 Vdc

*****Additionally, output will also turn off in an over voltage event (>17 Vdc) for device and output protection and/or if the input line fuse located on red wire to power source current limit (40 Amps) is exceeded resulting in blown fuse.**

System Diagram



Specifications

Nominal Voltage (Vdc)	12
Input Voltage Range (Vdc)	8.0-18.0
Max Continuous Current (Amps)	30
Installed Fuse (Ampere Rating)	40
Over Voltage Protection (Vdc) (15 sec)	17.0
Operating Current Draw (mA)	15
Operating Current (mA) Standby / Open	1.3
Input Wire Size (Red)	12 AWG / 18 in.
Output Wire Size (Orange)	12 AWG / 24 in.
Ignition Wire Size (Yellow)	18 AWG / 24 in.
Ground Wire Size (Black)	18 AWG / 24 in.
Housing Material	Glass-Filled Polycarbonate
Min Source Current (Yellow Signal Wire)	10 micro-Amps

Part Numbers

Bulk Pack

PT Series On Delay Single Output Relay	5603B
* Custom configurations available including control harness wires, time delays, voltage settings, dip switch functionality, and control input functionality. Low minimum quantities and short lead time for samples or production. Contact us at support@egismobile.com for more information	

Related Part Numbers

Resell Pack

Bulk Pack

PT Series On Delay One Shot Relay		5604B
PT Series 30A/12V Off Time Delay Relay		5601B
PT Series 30A/24V Off Time Delay Relay		5601-24B
RT Series 6 Position Fuse Block	8028	8028B
RT Series 6 Pos Fuse Block w/Gnd	8025	8025B
Cable Cap Insulator, 0.55 in Dia		4214



www.egismobile.com
360.768.1211
Bellingham, WA U.S.A

