



**EGIS**  
MOBILE ELECTRIC

Innovation  
For Demanding  
Electrical Systems

---

2024 - 2025  
**Product Guide  
Catalog**

[egismobile.com](http://egismobile.com)

## XD Series - High Amp Remote Battery Switching & Charge Management Relays



- Functional Replacement Options For Legacy Remote Switching Solutions From Blue Sea Systems And BEP Marine
- Triple XD Provides Compact Solution For Dual Battery Systems. Expandable To Three Or More Battery Banks Via Dual XD
- Available With Or Without Intuitive Front Facing Manual ON/OFF Override Knob
- Adjustable Voltage Sensing Relay (VSR) Open / Close Voltage Set Points For Flexibility Of Electrical System Response
- Optional Mechanical-Only Battery Switch Options Delivers The Balance Of Low Cost Manual Switching With High Amp VSRs

### Single/Dual/Triple Variations

- **Flex 1** - VSR/RELAY/LVD/TDR
- **Flex 2** - VSR/RELAY  
Compatible With Blue Sea Systems Control Schemes
- **Flex 3** - VSR/RELAY  
Compatible With BEP Control Schemes
- **Flex L** - VSR/RELAY  
Lithium Battery Compatible



35-75% Reduction In Mounting Space & Product Weight Via Advanced Bi-Stable Solenoid Design And Multi-Relay Assemblies That Support Common Battery System Approaches



Bullet-Proof Construction: Sealed To IP67/ IP6K9K - High Temperature Electronics And Materials Allow Mounting Anywhere - Stainless Steel Cable Lug Studs - Large 1/4-20 (M6) Mounting Holes



90-95% Less Off-State Current Compared To Competitive Products And Other System Solutions That Require Multiple Devices For Similar Functionality



Adaptive Charge Management For ACR/VSR Functionality Intelligently Eliminates Open/ Close Cycling Common With Competitive Solutions When Deeply Discharged Auxiliary Batteries Are Connected To Engine Batteries



## Advanced Automatic Charging Relays



**TH Series  
Single Output  
ACR**



**TH Series  
Dual Output  
ACR**



- Unique Triple Battery Model Reduces Install Space And Cost
- Fully Adjustable Open And Close Voltage Settings Maximize Flexibility
- Up To 160 Amp Capability Supports High Output Alternators
- Unique Triple Battery Model Reduces Install Space And Cost With 2x 80A Outputs

## TH Series Time Delay Relays



- Prevents Dead Batteries From Add-On Equipment, Maximizing Operational Readiness
- Ultra Low Off State Current Draw (1.3mA)
- Single and Dual Independent Output Models
- Optional Low Voltage Protection
- Protects Sensitive Electronics Via Under & Over Voltage Protection



## PT Series Time Delay & On Delay Relays



- Prevents Dead Batteries From Add-On Equipment
- Ultra Low Off State Current Draw (1.3mA)
- 30 Amp Continuous Rating
- Optional Low Voltage Protection
- Models Include Timed Off Delay, Timed ON Delay, And One Shot Functions

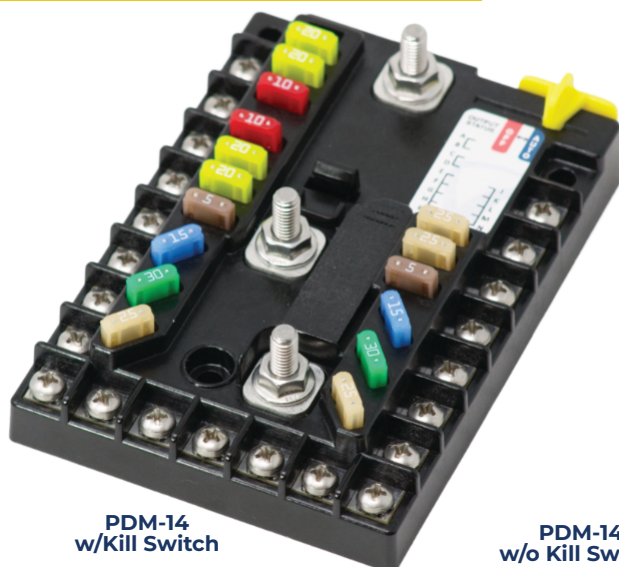
## TH Series Dual Battery Charge Manager



- Combines An 80 A Battery To Battery Charge Manager With An 80 A Time Delay Relay In One Compact Device
- Ultra Low Off State Current Draw (1.3mA)
- Fully Sealed With Integrated Connector

# Power Distribution Modules

## PDM-14 With & Without Kill Switch



**PDM-14  
w/Kill Switch**

**Protective  
Cover  
Included**

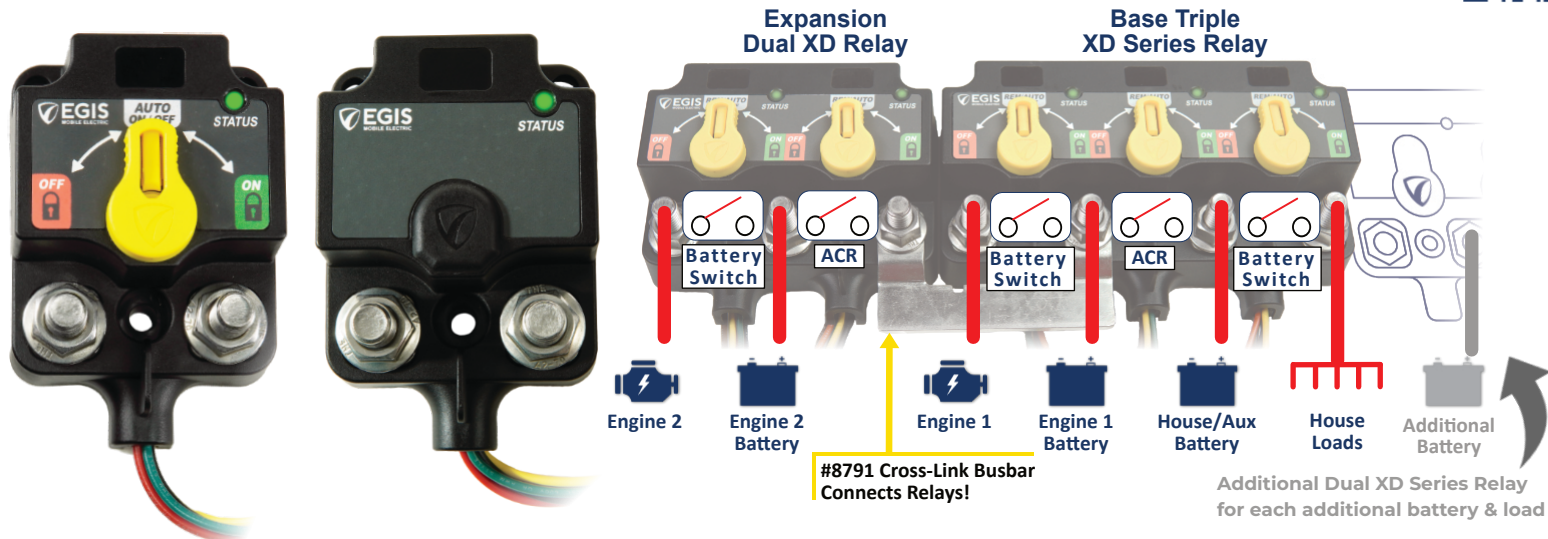


**PDM-14  
w/o Kill Switch**

- Reduces Space Used And Total Installed Cost, Combines Four Functions In One Product:
  - Power Switching
  - Circuit Protection
  - Ground Return Collection
  - Manual Override Kill Switch
- Ten 1-30 A Outputs & Three 1-45 A Outputs Support Low Amp And Medium Amp Circuits With One Solution
- Three Configurable Output Groups Can Be Set To 24/7, Ignition Switched, Or Time Delayed Off (15 Min to 10 Hr).
- Optional Low Voltage Protection For All Outputs
- Expandable Up To 26 Fused Outputs Via Optional Expansion Fuse Blocks

## XD Series High Amp Remote Switching Relays

## Modular / Expandable XD Relay System Configurations



- Available With Or Without Intuitive Front Facing Manual Override Knob
- 45-75% Smaller Footprint Than Comparable Legacy Solutions
- Expand To Support Additional Batteries/Loads With Optional Busbars To Additional Single, Dual, Or Triple XD Relays
- Sealed To IP67/IP6K9K, High Temperature Electronics And Materials Allow Mounting Anywhere - Stainless Steel Terminal Studs.
- Wire For Wire Compatible With Blue Sea ML Remote Battery Switches.
- Input Studs Orientated For Easy Cable Assembly And Downward Routing
- Protective Cover With Integrated Label Recesses
- Large Mounting Holes Accept 1/4-20 / M6 Attachment Hardware

## TH Series 12V & 24V Sealed Relays

- 160A Single or 2x 80A Dual Outputs
- Simple & Robust Installation - Sealed MX-150 Plug/Harness With 2 ft Control Wires Included - Deutsch DT/AT Connector Option
- Integral Diode Flyback Protection



## Sealed 12V & 24V 180A Relays

- 12 Volt & 24 Volt Versions
- Delphi / Metripak Connector Compatible
- Engine Compartment Temperature Rated
- Drop In Replacement To TE Relay



## Tab Mount 40A Form C Sealed Relay

- Provides Normally Open & Normally Closed Outputs
- Enhanced Vibration Protection
- Robust Drop In Replacement Ensures Compatibility With Legacy Electrical Systems.
- Reinforced Vertical Mounting Tab Withstands Wire And Cable Loading



## Automotive 75A 12V Relays

- Automotive Grade Relay, Robust Construction
- Optional Dual-Diode Version Prevents Flyback Voltage To Control Circuits
- Bifurcated Silver Alloy Electrical Contacts
- 150 Amp Intermittent Rating (3 Seconds)



## 400 Amp High Voltage Hermetically Sealed Contactor



- 12 / 24 V Universal Control Voltage
- Hermetically Sealed With High Switching Cycle Rating
- Optional Auxiliary Contacts For Remote Status Indication
- Ignition Protected

## 100 Amp High Voltage Hermetically Sealed Contactor



- 12 / 24 V Universal Control Voltage
- Hermetically Sealed and High Switching Cycle Rating
- Optional Auxiliary Contacts For Remote Status Indication
- Ignition Protected

## Busbars & Insulators

### Terminal Blocks

- 30A & 65A Variations
- 2, 4, 6, 8, 10, 12 Position Variations
- Stainless Steel Hardware And Tin Plated Conductors
- Each Screw Pair Is One Isolated Circuit



65 Amp Terminal Block

30 Amp Terminal Block

### High Amp Inter-Connection Busbars

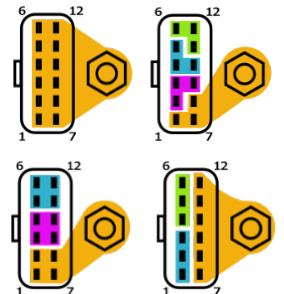


- Connects Adjacent Product Terminals Together, Reducing Copper Cabling Labor Costs.
- Available In Dual, Triple, Quad, & Crossover Link Configurations

### Sealed Distribution & Ground Blocks



- Sealed MX-150 Connector Ensures Low Amp Connections Are Protected From Moisture And Corrosion.
- Mounts Vertically Or Horizontally To Optimize Installation
- Replaces Exposed Terminal Blocks, And But Splices



### Protective Terminal Insulators



- Protects Terminal Studs Against Inadvertent Short Circuits
- M6 (1/4") And M5 (#10) Sizes Available
- High Temp Material Construction
- Flexible Material Ensure Easy Application And Long Term Usability



## New - MT Series Sealed Circuit Breaker / Fuse Block

Marine Terminal (MT) Series Sealed Marine Fuse And Circuit Breaker Blocks Are An Industry First. With Standard Integrated Deutsch™ / Amphenol™ Connectors, These Innovative Solutions Support Highly Reliable Electrical Systems That Reduce Assembly Failures Associated With Traditional Screw Terminations.



- 12 Total Circuits In Single Or Split Input Variations (6+6, 3+9, Or 9+3)
- Supports ATM/MINI Fuses And/Or Type 3 ATM/MINI Circuit Breakers (Pg. 7)
- Low-Amp Ground Return Wires Internally Connect With High-Amp Ground Busbar
- Four (4) Spare Fuse Locations
- Seamlessly Interconnects With Other Power Management Devices (XD, Sealed MIDI) Via Optional Busbars (Pg. 4) For Expanded Electrical System Needs

## RT Series ATO /ATC Fuse Blocks



- Six (6), Twelve (12), and Eighteen (18) Circuit Versions
- Integral Blown Fuse LED Indicators
- Optional Twelve (12) Circuit Ground Return
- Modular Design Enables Easy Expansion
- Tin-Plated Copper And Stainless Steel Self-Locking Hardware

## New - RT Series Single Row ATO / ATC Fuse Blocks



- 4 And 8 Circuit Versions
- Cover Accepts Circuit Identification Labels
- Compact Footprint
- Tin-Plated Copper And Stainless Steel Self-Locking Hardware

## New - RT Series Independent Circuit ATO /ATC Fuse Block



- Six Independent Inputs/Outputs.
- Protective Cover With Label Recesses
- Tin-Plated Copper And Stainless Steel Self-Locking Hardware

## New - MIDI / AMI Sealed Fuse Block



- Sealed Against Harsh Environments
- 500 Amp Total / Pass Through Current
- Stainless Steel Self-Locking Hardware
- M6 (3/4") Or M8 (5/16") Output Variations Available
- Connects To Other Power Management Devices Via Optional Link Busbars (Pg. 4)
- Cover Label With Space For Identifying Load Circuits

## New - MIDI & MEGA Fuse Holders



- MIDI Version Capable Of Adjacent Stacking, Creating A Compact Solution
- Marine Rated Construction w/Stainless Steel Hardware
- Protective Cover Prevents Electrical Shorts

## CT Series Fuse Block



- 200 Amp Total Current, Eight (8) Low Amp ATO/ATC Outputs, Two (2) High Amp Low Profile J-Case Outputs
- MX-150 Plug & Play Connectors For Low-Amp Outputs
- Compact Footprint
- Label Recesses On Protective Cover For Circuit Identification

# Fuse & Circuit Breaker Blocks - Continued

## MRBF Fuse Blocks



- Compact Fuse Holder Provides High Current (30 - 300 Amp) Protection In Tight Space Constraints
- Senselessly Connects To Battery Posts, XD Relay Input/Output Terminals, Or High Amp Distribution Busbars
- Ignition Protected When Used With MRBF Terminal Fuses (Pg. 7)
- Insulating Cap Prevents Accidental Electrical Contact

## ATM/MINI Fuse Blocks



- Available In Single Or Dual (Split) Input Variations
- Compact Solution Combines Circuit Protection & Ground Return In One Installer Friendly Device
- Expands PDM-14 For Added Circuit Protection
- 200 Amp Total Continuous Current

# Circuit Breakers & Fuses

## 87 Series Circuit Breakers



- Sealed Against Dust & Water
- Surface & Panel Mount Options Available
- 25 - 250 Amp Continuous Current Rating Options
- Ignition Protected

## 85 Series Circuit Breakers



- Sealed Against Dust & Water
- Surface / Panel Mount Options Available
- 25 - 250 Amp Continuous Current Rating Options
- Ignition Protected

## New - Short Stop Marine Grade Circuit Breakers



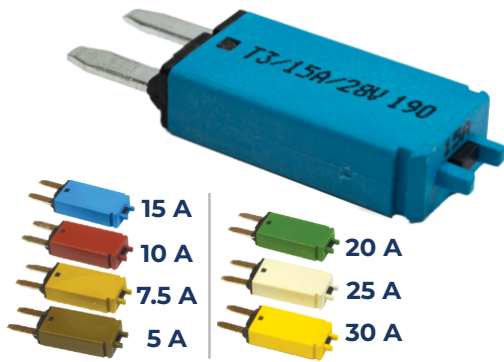
- 5 - 50 Amp Continuous Current Rating Options
- Harsh Environment Design Ideal For Marine & Vehicle Electrical Systems
- Locking Nuts For Withstanding Vibration

## New - Short Stop Circuit Breaker Protective Cover



- Protects Terminals From Accidental Electrical Shorts
- Simple Installation. Silicone Cover Locks Onto Circuit Breaker Terminal Studs

## New - ATM / MINI Circuit Breakers



- 5 - 30 Amp Rating Options
- Type III Resetable
- Color Coded For Easy ID Of Amperage Rating
- Compatible With MT Series Fuse/CB Blocks

## New - Mini Breaker Disconnect Switches



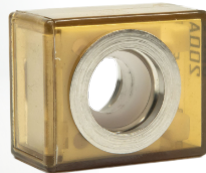
- Circuit Breaker With Rotary On/Off Switch
- IP66 Weatherproof Design
- 20 - 60 Amp Rating Options
- Type III - Trip Free Design

## New - MD Series Circuit Breakers



- Sealed Against Dust & Water
- Compact Footprint
- 15 - 60 Amp Rating Options
- Trip Free Design

## New - MRBF Fuses

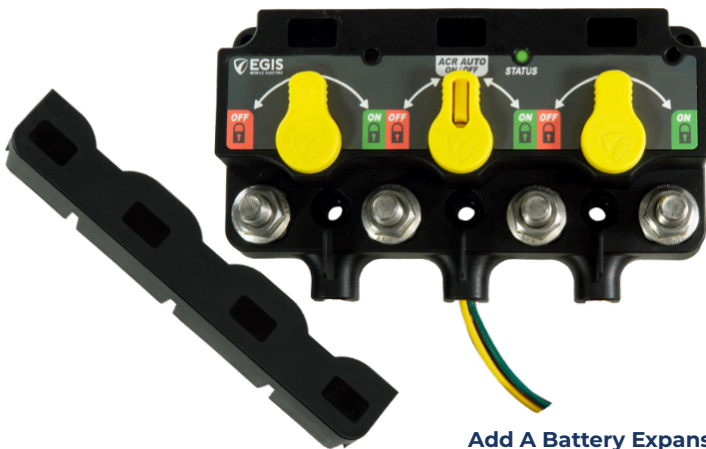


- 30-300 Amp Ranges Available
- Transparent Easy Visual Of Fuse Status
- Ignition Protected SAE/J1171 - ISO8846
- High Interrupt Rating Satisfies ABYC Requirements For DC Main Circuit Protection On Large Battery Banks
- Color Coded For Easy ID Of Amperage Rating



# Manual Battery Disconnect Solutions

## Add A Battery XD Series With Mechanical Switches



### Add A Battery Expansion w/Remote VSR & 1 (One) Mechanical Only Switch



- Combines High Amp Voltage Sensing Relay w/Mechanical Battery Switches
- High Visibility Knobs Provide Easy Visual Of Switch Status
- Surface Mount Form Factor Simplifies Mounting And Cable Assembly
- Protective Terminal Cover Included
- Ignition Protected
- IP67 Ingress Protection

## XD Single - 500 A Heavy Duty Battery Switch/Mechanical Contactor



- IP67 Ingress Protection
- M10 (3/8") Cable Studs For Heavy Duty Connections
- Surface Mount Form Factor Simplifies Mounting And Cable Assembly
- Protective Terminal Cover Included
- Ignition Protected



Egis Mobile Electric  
3135 Mercer Ave, Suite 102  
Bellingham, WA 98225  
+1-360-768-1211  
sales@egismobile.com  
egismobile.com